

# DONATION REPLY FORM

These projects need your financial support and will be gratefully received by our Development Office, Suite 500-5950 University Blvd., Vancouver, BC V6T 1Z3. One of the easiest and fastest ways to donate to UBC is to make a secure on-line gift by credit card. Access [www.supporting.ubc.ca](http://www.supporting.ubc.ca) and follow the instructions to make an on-line gift. Thank you for your support!

- ☐ Mary Hill Scholarship
- ☐ Lilian To Memorial Scholarship Fund
- ☐ Richard Splane Doctoral Scholarship Endowment Fund
- ☐ 75th Social Work Anniversary Global Learning Endowment Fund
- ☐ Henry Maas Memorial Scholarship Endowment Fund
- ☐ Roopchand Seebaran Prize
- ☐ Annual Giving Fund

Name: \_\_\_\_\_ e-mail: \_\_\_\_\_

Address: \_\_\_\_\_

Does this match your mailing label? \_\_\_\_ Yes \_\_\_\_ No  
[To update your contact details go to [www.vpadminfinance.ubc.ca/adv\\_services/update\\_addr.html](http://www.vpadminfinance.ubc.ca/adv_services/update_addr.html)]

Editorial committee: Suzanne Moore, Graham Riches  
School of Social Work, The University of British Columbia  
2080 West Mall, Vancouver B.C. V6T 1Z2 604-822-2255 • fax 604-822-8656  
webpage: [www.socialwork.ubc.ca](http://www.socialwork.ubc.ca)

**Attention Alumni:** The next edition of *The Bridge* will be published in the Fall, 2008. We depend on alumni, friends and relatives for Alumni information. Please send any contributions, comments, questions or items of interest to the Editorial Committee at the address above or to [suzanne.moore@ubc.ca](mailto:suzanne.moore@ubc.ca).

## May & November, 2007 Graduate Statistics

37 Master of Social Work graduates

2 Master of Arts in Family Studies graduates

32 Bachelor of Arts in Family Studies graduates

44 Bachelor of Social Work graduates

115 total

*Congratulations Graduates of 2007!*

Mail to:

# the Bridge

Spring/Summer 2008

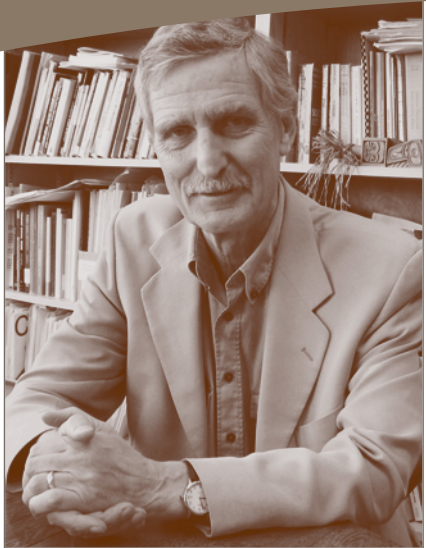
The School of Social Work

*Building upon a foundation of social justice and an ethic of care, we are a community of learners actively engaged in the development of critical, transformative knowledge for social work practice.*



## Report...

from the Director,  
Professor Graham Riches



### Table of Contents

Colloquium: .....	18
The Richard B. Splane	
Public Social Policy Lecture .....	20
Continuing Education .....	22
Director's Report .....	1
Donors & Contributors .....	23
Field Education .....	15
Fundraising .....	21
Graduate Statistics .....	24
Internationalization .....	14
People: .....	6
In Memoriam .....	6
Sessional Profiles .....	7
Alumni .....	7
Students: News & Views .....	7
Recent Graduates .....	5
Research Roundup .....	16
School Updates: .....	12
First Nations BSW Program	
– Pilot Project .....	12
Centre for Research on Personhood	
in Dementia (CRPD) .....	13
Community Living Research Project ...	13

In my final report as director of the School I would like to comment on the year just passed, to reflect a little on the last decade and the journey the School has taken and to extend a very warm welcome to the new director, and to our acting director for 2008/09.

#### 2007-08 The year just passed

As indicated in the previous edition of *The Bridge* (Spring/Summer 2007), this year has seen significant change in the organization and structure of the School. Following Senate approval in the fall, 2007, our former Family Studies colleagues have now officially joined the Department of Sociology and the School has been re-established as the UBC School of Social Work. We wish our former colleagues well in their new home and at the same time are delighted to welcome **Dr. Sheila Marshall** to our faculty ranks as she wished to join Social Work. Sheila's teaching and research interests and expertise are in child development, adolescence and identity and she brings a rich strength in quantitative research analysis.

#### Goings and comings

The transition of Family Studies to Sociology also had implications for staff positions. Sadly for Social Work but happily for Family Studies, **Kristin Sopotiuk**, Assistant to the Director, moved with her position to Sociology. Kristin, appointed in 2002, proved to be a pillar of exceptional support, professional competence and quiet but cheerful diplomacy at all times. I knew that I could always rely on her tact and judgment and we know that our loss is Sociology's gain. **Cathy Joyce**, appointed in 2006, as School Secretary, will also be missed. Cathy brought attention to detail, organizational flair and a real capacity for getting the job done which was much appreciated by all faculty, staff and students. We also have had to say farewell to **Debbie Erickson**, our Associate Field Education Coordinator who after four years of developing and strengthening our Field Education Unit has returned to the field of direct social work practice. Debbie brought high professional standards, an openness to student practice learning needs and an ability to work constructively with local, national

and international social service agencies that was much praised by social work faculty, students and practitioners alike. We wish all three the very best in their future careers and remain grateful for their contributions to the School.

The result of these changes meant that we lost one secretarial position but we have been very fortunate to hire two excellent new staff members. We would like to welcome **Nancy Kan** as the new Assistant to the Director. Nancy joins us from a senior secretarial position in the UBC Department of Microbiology and Immunology. Nancy's move from Science to Arts and Social Work has been extremely smooth and we are already appreciating her quiet and effective professional abilities and her administrative strengths in quickly adjusting to her new role. Also a warm welcome to our new Field Education Coordinator, **Laura Harvey**. Laura is a qualified social worker (UVic) and with a number of years of direct practice in diverse agencies is joining us from Family Services of Greater Vancouver. We are delighted to welcome both Laura and Nancy to our staff team and know that the School and its educational activities will be enriched by their presence and contributions.

#### *Focusing on the future*

I think it is fair to say the re-emergence of the School of Social Work has enabled us to focus our social work education mission. This is now captured in our new vision statement which appears on our new web site, still a work in progress, ([www.socialwork.ubc.ca](http://www.socialwork.ubc.ca)):

*Building upon a foundation of social justice and an ethic of care, we are a community of*

*learners actively engaged in the development of critical, transformative knowledge for social work practice.*

The year has been one of responding to the further recommendations of the 2007 UBC External Review. The question as to whether a single school of social work through merging the UBC:V and UBC:O campuses in a single (dual campus and joint on-line learning) school is both desirable and feasible remains a matter for the longer term. Certainly, however, the External Review finding that the UBC:V School lacks sufficient faculty resource capacity to continue to offer its on campus BSW along with the MSW and PhD programmes remains very much a live question, prompting the question whether the School should become a graduate school of social work.

This issue was the subject of further examination by the BSW Re-Accreditation Team during its on-site visit in March 2008. While a strong argument in favour of retaining the BSW programme is the fact we offer the only on-campus BSW in Vancouver within the Lower Mainland (the University of the Fraser Valley also offers a BSW), additional faculty resources will be required if the BSW, the First Nations Social Work Program, the MSW and PhD programmes are to be maintained (and their quality assured) along with the demands of scholarly activity and service within a research intensive university such as UBC.

Recognizing the significance of this faculty resource issue the CASWE Board of Accreditation granted a two year re-accreditation of the BSW program requesting the University to approve an additional 2.5 faculty positions

and full time Field Education Coordinator. It is pleasing to report that the University is actively pursuing ways to address these faculty and staff shortages in order to secure and advance the full range of the School's teaching programmes including the BSW. Stay tuned!

#### *Teaching, Research and Student achievements*

In the midst of all the changes this year, the School's teaching, research and service continued to achieve high standards. Not only is this demonstrated through the excellence of the teaching of faculty and sessional instructors but also in the range and quality of their research which is reviewed later in this report.

Particularly pleasing has been the extent to which the School's students – BSW, MSW and PhD – have been the recipients of external and/or UBC leadership and research awards. Many congratulations to **Jen Smith** and **Julia Peirce** (graduating BSW Students) who were recognized by the UBC Faculty of Arts with *Student Leadership Awards*; **Jen** along with **Nathan Allen** (UBC Alumnus) was also an invited presenter at the 2008 *UBC Student Leadership Conference* on the topic of 'Insite for the future' (the Downtown Eastside Safe Injection Site); six 3<sup>rd</sup> year BSW students : **Carolyn Taylor**, **Maureen Connolly**, **Anna Rappaport**, **Emma Wolchok**, **Dillon Adams** and **Leya Eguchi** were selected to make presentations at the 7<sup>th</sup> *Annual UBC Multidisciplinary Undergraduate Research Conference* and **Leya** was awarded a prize for her poster presentation 'Child behavioural difficulties: exploring the parent's experience'; **Ryna Olonan** (MSW) was the only UBC student in

receipt of the *Students for Development Award*, funded by CIDA and managed by the Association of Universities and Colleges of Canada, which has enabled her to embark on a capacity building project in Uganda strengthening that country's AIDS services for young people; **Marcus Greatheart** (MSW) won a *Canadian Institutes of Health Research (CIHR) IMPART Masters Training Fellowship*; and **Harvey Bosma** (PhD) was a recipient of a *Michael Smith Foundation for Health Research (MSFHR) Senior Graduate Scholarship (Health Services)*.

We also wish to honour the posthumous award of the MSW degree to **Autumn Jenkinson**, a graduate student in the School, who tragically died in a traffic accident in May, 2007. The award of the degree was in recognition of Autumn's academic achievements and her outstanding contributions as a student leader at the provincial level through BCASW and nationally through her contributions to CASW and CASWE,

Through the generosity of our alumni and donors over the years the School is itself able to offer twenty one different student social work awards. The names of this year's recipients nine BSW, ten MSW and two doctoral students are presented on page 9 along with those of the four MSW students who were awarded grants from the *Community Care Research Fund*.

The ability of our students to attract prestigious external grants and meet the scholarship criteria for the School's internal awards is a testimony both to the strength of research teaching in the School directed at the advancement of practice and policy as well as the rich curriculum of our educational

programmes to say nothing of the quality of our students, faculty and staff. Many congratulations to all.

#### *Visitors to the School*

We were delighted to welcome a number of Visiting Professors to the School who enriched our thinking and contributed to our scholarly activities: **Professor Gry Sayer** (MSW Alumna '74) from the Department of Social Education and Social Work, Bergen University College, Norway; **Dr. Neerja Chadha**, the School of Continuing Education, Indira Gandhi National Open University, India; **Dr. Jane Kroeger**, Department of Psychology, University of Tromsø, Norway and **Dr. Alice Home** (UBC MSW Alumna '69), School of Social Work, University of Ottawa. We are also pleased to extend a very warm welcome to **Dr. Seung Yeun Shin**, Associate Professor in the School of Social Work, Pyung Taek University, Korea who will be spending her sabbatical year with us commencing June, 2008.

#### *Congratulations*

Many congratulations to **Patsy George**, MSW, C.M., O.B.C., long



(left) Patsy George, MSW, C.M., O.B.C.; (right) Her Excellency The Right Honourable Michaëlle Jean, C.C., C.M.M., C.O.M., C.D., Governor General of Canada

time friend of the School and well known BC social worker, for the award of the Order of Canada.

Patsy has had a distinguished career in social work and continues to be a leading human rights activist with strong commitments to community development and social justice. Her support for the School has always been a source of encouragement and inspiration.

#### *Human Rights Lecture*

It also gives me great pleasure to announce that **Professor Stephen Toope**, **UBC President**, has kindly agreed to present the second *Annual Dr. Richard Splane Lecture* on the topic of "*International Human Rights: Canada's role in combating global poverty*". This lecture series, inaugurated in 2007, is co-sponsored with the United Nations Association in Canada and the World Federalist Movement of Canada with the advice of **Patsy George**, President of the UNA (Vancouver Branch). As many of you will know Professor Toope's field of academic and professional expertise and interest is international human rights law. To have such an eminent speaker on the topic of human rights is entirely fitting in that 2008 is the sixtieth anniversary of the signing of the *Universal Declaration of Human Rights*. The lecture will be held on campus in the Liu Centre, October 2, 2008.

#### *1998-2008: A short reflection*

Now is the time to say good bye! I have enjoyed my decade as director and am more than pleased to have been offered this opportunity. I would sincerely like to thank all those, too many to mention by name, with whom I have had the privilege and pleasure of working in the School, UBC and the wider community. I like to think that we have built on the School's impressive record from the past and further expanded its reach.



Compared to other leading schools of social work in Canada and internationally what we lack in faculty positions (a continuing and serious shortfall) we make up for in the exceptional abilities of our professors, staff and students. All full-time faculty in the School are now tenured and this also reflects highly on our more recent appointments – **Dr. Grant Charles, Dr. Pilar Riaño-Alcalá** and **Dr. Miu Chung Yan** who have all been promoted to Associate Professor. Many congratulations!

The BSW programme has fully revised its curriculum; we have pioneered a pilot Social Work Programme with the Squamish First Nation; restructured the MSW programme now creating an entry into a two year programme for those without BSWs and have introduced the first PhD in Social Work in British Columbia. Through our participation in the establishment of the UBC College of Health Disciplines we have contributed to and benefited from the introduction of inter-professional education. In the area of field education and with our professional partners in the real world of social work practice we have strengthened learning opportunities for our students. We have built constructive and positive relationships with BC’s six other schools of social work and with BCASW and the BRSW. Nationally faculty have served an important leaderships role on the CASWE Board of Accreditation.

Faculty research if judged in conventional terms by grants received, and the quality of publications has been exceptional. More than this our research, as it should be, has also been an important bridge to many academic and agency constituencies and to the community at large. **The Centre for Research on Personhood in Dementia** and the establishment of the new **Centre for Inclusion and Citizenship** in the area of developmental disability are leading examples of this approach and commitment. Indeed the full range of faculty research has forged local, national and international connections and networks contributing to the development of new social work education, practice and policy – across BC, Canada and its North; in Latin America and the Asia Pacific including Australia, China and Hong Kong, and Vietnam; in Nigeria and Mozambique and Europe. Such a record bodes well for the future.

In passing on the torch I would like to wish warm greetings to **Dr. Brian O’Neill** who will be serving as Interim Director from July 1/08 – June 30/09. Brian has kindly agreed to take on these additional duties until **Dr. Kwong-leung Tang** arrives to take up the director-

ship in July 2009. We extend a very warm welcome to **Dr. Tang** who is currently Professor and Director of the School of Social Work at the Chinese University of Hong Kong. Dr. Tang’s academic qualifications in social work, social policy and law are from the universities of Hong Kong, UC Berkeley, the London School of Economics and Cambridge. He is an eminent and frequently published scholar in social policy with wide international interests including East Asia and Canada. He was formerly Professor and Chair of the Department of Social Work at the University of Northern British Columbia and will bring a knowledgeable and trained eye to social work developments in BC. I would like to wish Brian and Tang, on his arrival, all the very best for the future of the School.

Au revoir  
Graham Riches, Professor and Director



RECENT GRADUATES

MA (Family Studies) November 2007

Deyell, Stewart	Resources and Coping Strategies: An Analysis of the Japanese Canadian Internment During the Second World War
Easterbrook, Adam	A critique of parental monitoring using Bandura’s social cognitive learning theory as framework
Miller, Adena	Adult daughters of parental divorce: constructing current relationships with nonresidential fathers

MSW May 2007

Baker, Nancy	It’s a do-it-yourself hospital: the experiences of persons 65 and older who have been hospitalized without family involvement
Barzilay, Idit	A Case Study of ‘Lunch a la Kart’ a Consumer Run Business, Vancouver Canada
Cameron, Michelle	Ts’ekoo Beni Hinzoo: Urban Aboriginal Parents’ Experience of a Culturally Specific Parenting Program
Chard, Tracy	Refugee Claimant Children in Canadian Detention
Daniels, Marcy	When the War is Never Over: The Role of Canadian Forces’ Social Workers in the Prevention of and Intervention with Post Traumatic Stress Disorder
Hamilton, Shelley	Transition to Nowhere: FASD Affected Youth in MCFD Foster Care
Killam, Lindsay	The Role of Shame in Women’s Experience of Addiction
Lake, Christine	Post Traumatic Stress and the Link with Substance Abuse: What are Best Practices for Social Work?
Mangila-Nguyen, Maria	The Help-seeking Experiences of Refugee Women: Narratives of Resilience, Resistance and Reconstruction of Identities
Newman, Jill	Homophobic Violence: Experiences of Lesbian Parents
Sosnowski, Tiffany	Transitions: An Exploration of Youth Experience as they Move from Youth Agreements to Independence
Strubin, Tanya	Factors Influencing foster placement outcomes for children in British Columbia
Taylor, Evin	Invisible Men: Transmen in Canadian Health Care

November 2007

Action, Penny	Understanding and Treating Conduct Disorder: A Practice Approach
Banga, Parveen	The core components of an early intervention treatment approach as perceived by substance-misusing pregnant women
Birring, Veena	Running Head: Experiences of South Asian Parents of Children with Disabilities
Braun, Joan	Child Protection Mediation: Mediator Strategies for Managing the Process
Galuska, Sarah	“I Feel Like a Hostage”: Body Mapping with Women Living with HIV/AIDS To Resist Felt HIV-Related Stigma
Gill, Janice	Negotiating cultural Identities: Experiences of Second-Generation Sikh Women
Gordon, Leslie	Depression in Older Women: A Critical Feminist Critique of the Biomedical Approach to Treatment
Hamel, Chelsea	“A Little Deeper”: Exploring Self-Harm

Harding, Emily	You have to be more mindful: Social Workers' Experiences of Boundaries in Assertive Community Treatment (Act)
Hobson, John	Finding Resistance and Alternatives within the Traditional Mental Health System
Johnson, Andrea	Vicarious Traumatization: A study of the Experiences of Canadian Mental Health Clinicians
Kendrick, David	Perspectives on Factors leading to Employment in Mentally Ill Men
Lake, Sarah	Is Social Work what you expected? An examination of needs and expectations of the work
Lam, Stephanie	Second Generation East Asian-Canadian Women's Relationship to North American Standards of Beauty
Marchand, Patricia	A Parent Speaks: Financial Difficulty and Childhood Cancer
Preston, Beth	Openness in Adoptions of Children in Care: Social Workers' Perspectives
Rea, Angela	Tainted Love: Intimate Partner Violence in Gay Male Relationships
Ross, Kailey	Maybe It's All in My Head: Women's Experiences with Chronic Pain
Sager, Catherine	Constructing Kindness: Social Work Practice with Involuntary Clients
Sandhu, Sharan	Cultural Minorities and Mental Illness
Schwartz, Joanne	Outreach to Intermarried Couples in the Vancouver Jewish Community
Uppal, Baljit	Examining the Logic of Hiring Ethno-Racial Social Workers to Serve Ethno-Racial Clients
Wojcik, Edyta	Factors that Help and Hinder the Integration Process of Skilled Immigrants into the Canadian Labour Work Force

## PEOPLE

### In Memoriam

#### Le Huquet, Mary Frew (Mae)

Mae Le Huquet passed away on December 8, 2007 in Nanaimo, BC. She grew up in South Slokan and attended the University of British Columbia where she trained in social work, receiving a BA, BSW and MSW. She met her future husband Ray Le Huquet while in University and they were married in 1951 in Victoria. During her early married years Mae worked as a hospital social worker at Vancouver General Hospital until the birth of her first child. While raising her family Mae pursued a range of academic interests in history, languages and culture and active involvement in the Oak Bay community. She will be missed by her friends in the Glenelg Road walkers group, bridge club and the Spinners and Weavers Club. She is survived by two children and their spouses and three grandchildren. Donations to Victoria Hospice would be greatly appreciated.

notice submitted by Anna I. Allen

#### Amacher, Kloh-Ann

Dr. Kloh-Ann Amacher passed away December 27, 2007 in New Westminster, BC. She was a highly regarded member of the UBC School of Social Work faculty for almost two decades (1973-1991). She came to the School as an experienced social work clinician and academic having attained an MSW at the

University of California, Berkley in 1961, and subsequently worked in public assistance and child welfare in Oregon and California, including child welfare supervision in San Francisco. In 1971 she obtained a Ph.D. from Smith College in 1971. The results of her Ph.D. research reported in her dissertation, "Explorations into the dynamics of learning in field work" influenced the organization and delivery of field work at Smith College and subsequently at UBC. Prior to joining the UBC faculty she had been employed as a lecturer in Social Work at the University of California, Berkley and as an Assistant Professor at Smith College. Among Kloh-Ann's many contributions to the UBC School of Social Work included development and teaching a course on work with children as well as substantial developments of the Directed Field Studies curriculum. As the Coordinator of Field Instruction and Chairperson of the Field Instruction Policy Task Force, positions that she occupied for many years, Kloh-Ann developed a Manual for Directed Field Studies, developed and distributed a newsletter to field agencies, organized and presented a series of workshops for field instructors, and was engaged in researching improved measures of field work performance. In addition, Kloh-Ann was an active BCASW member and presented workshops on interventions with children to a number of social service agencies. Kloh-Ann's contributions to the School continue to influence the organization and delivery of the Directed Field Studies Curriculum. Her many social work colleagues and friends remember her fondly.

Submitted by Mary Russell, Professor

## Alumni

**M**arty Lund reports that following Kimberly Azyan's stepping down as President, the Board of the Social Work Alumni Association is currently in a state of hiatus. Kimberly had for many years provided an Alumni Report but as of this time there is no formal representative and thus no report.

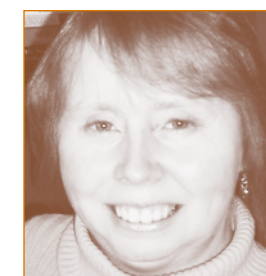
However, Marty has been involved along with Mary Clohosey from September 2007 to the end of April 2008, coordinating the maintenance of the Alumni Reading Room with the assistance of a Work Study student, Sky Samuel. This activity, initiated by the Alumni at least 12 years ago, continues at the School and Mary has been the project coordinator for many years. The main task now is maintaining theses and major papers for students' use, as well as material in the Reading Room. Sky did a very good job, which was appreciated by School staff.

Marty has kindly volunteered for the next academic year to reprise his role with the Work Study student but in the longer term notes this should be discussed with the new director.

Brian O'Neill, Acting Director, has indicated that if there is any interest by Alumni to support any School/Alumni initiatives in the future to please contact him at [bjoneill@interchange.ubc.ca](mailto:bjoneill@interchange.ubc.ca).

### Sessional Profiles

**V**aughan has taught graduate and undergraduate research at the School of Social Work for the last five years. She also teaches in two other programs at UBC, Counselling Psychology and Vocational Rehabilitation. She recently finished writing her first online course for UBC.



Vaughan Marshall

Vaughan started out with a B.A. in English, and then trained to become a school teacher. After a few years of teaching elementary school, she decided to pursue a Master's degree in Counselling, with a view to being a school counsellor. But the academic bug bit, and she kept going, eventually earning a Ph.D. in Counselling Psychology.

Vaughan loves qualitative research, and especially enjoys incorporating the arts in research, and exploring new ways of representing research findings. Her own research has focused on the ways in which people make meaning of illness, and on the ways in which coping is manifest in the narrative structures of stories told by mothers of children with autism. She is currently researching the ways in which adolescents with rheumatic diseases understand the vocational implications of their conditions. She enjoys getting students excited about research, and mentoring them through the research process.

Vaughan loves music, and has been known to get students to sing! She and her young daughter Maria especially love to go to Gospel/ World music concerts. She is terrified of, and exhilarated by, vocal improvisation classes, which she takes as often as she can. She is a passionate advocate of adoption, and has a deep interest in issues of human rights.

**W**ayne Nickel, MSW, RSW graduated from Carleton University in 1974 and has spent 39 years in the field almost equally divided between direct clinical practice and management. His work experience includes child welfare, residential treatment programmes, addictions and EAP services. In addition to his sessional work at UBC, he teaches distance education courses with the Open Learning Agency, now part of Thompson Rivers University, since 1989. He also has a private practice with a significant focus on trauma work.

### Students: News & Views

#### Making Connections For Children in Permanent Care



**T**he concept of Family Finders arose out of work done by the Red Cross in Rwanda. Along with food, shelter and medical care, family connections were identified as a basic need. The Red Cross developed a number of unique strategies to assist in reuniting children who had been separated from family through war. These techniques were adapted and implemented to help search for family



members of children in permanent care who often have little information about their birth family and many extended family members have no idea what became of the child.

My family finding experience began during my practicum at the MCFD. I joined the Vancouver Coastal Family Finders project in anticipation of participating in six months of training and practical experience in creating family connections. Kevin Campbell, a pioneer in finding families for youth in care, provided hands on coaching, teaching of search strategies and interview skills. The project consisted of 26 children, 20 "search pods" and 60 social workers from MCFD, Adoptive Families Association, Wendy's Wonderful Kids and Hollyburn Family Services. Each pod worked with one child or sibling group. The pods "mined" the children's files, used online, and other search techniques to identify birth family members; contacted as many members as possible; gathered family information; set-up family meetings and eventually developed plans for contact or placement.

This experience provided me with skills that will be valuable to my future practice. Most importantly, the family members I linked together were a reminder of the basic need for all of us to feel connected, to belong. The goals of the Family Finders pilot project included increasing permanency for children and promoting child centered and collaborative practice. Many children were connected with extended family members and some found "forever families" through adoption.

Andrea Harstone, BSW Student  
aharstone@shaw.ca

Stuart Rennie, Project Co-Leader  
Ministry for Children and Family Development  
Stuart.Rennie@gov.bc.ca

## Trans Health Research continues at School of Social Work

**M**arcus Greatheart, a student in the Foundation year of the MSW program, was recently awarded a Fellowship through the Integrated Mentor Program in Addiction Research Training (IMPART). IMPART is an innovative, multidisciplinary research training initiative of the Canadian Institutes of Health Research (CIHR). The program will provide funding for Greatheart to carry out thesis research on mental health and addiction issues among female-to male transgender men.

Greatheart will conduct qualitative interviews this fall and follow-up with a broader survey next spring. Working with an Advisory Committee of trans men, and in collaboration with the Transgender Health Program at Vancouver Coastal Health, Greatheart will ensure the knowledge gained from the project is shared with social work colleagues, health care providers and policy makers.

The same project proposal is currently under review by the Michael Smith Foundation for Health Research and was recently forwarded to Ottawa for national CIHR award consideration.

Greatheart is supervised by Drs. Brian O'Neill and Pilar Riaño-Alcalá of the School of Social Work, and Dr. Aaron Devor, Dean of Graduate Studies at the University of Victoria. O'Neill recently supervised Evin Taylor's (MSW, 2006) graduating essay on access to healthcare for trans men.

Greatheart received his Honours B.A. in Art History from the University of Victoria last year, and has extensive experience working with LGBT community, specifically on youth issues, gay men's health and HIV/AIDS. Most recently he worked with a research team at the BC Centre for Excellence in HIV/AIDS studying crystal methamphetamine use among gay men in Vancouver.



BCASW Research Week



## Social Work Student Awards

Awards Winners for 07W  
Neil Douglas McKay Scholarships:  
Maria Lyrantzis (MSW)  
Carmela Sutcliffe (MSW)

Laura Holland Scholarship:  
Shelley Madill (BSW)

Zella Collins Scholarship:  
Jenny Sanders (BSW)

Beatrice Wellington Gonzales Memorial Scholarship:  
Carolyn Turner (BSW)

Thomas A. Dohm QC Scholarship:  
Magdalene Athanasopoulos (MSW)

Jean Jure Scholarship:  
Melissa Medjuck (MSW)

Linda Smith Hawkes Scholarships:  
Tara Keogh (MSW)  
Amenda Kumar (MSW)

Jack and Isabel Kirkpatrick Scholarships:  
Selena Chang (BSW)  
Denise Wong (BSW)

St. Leonard's Youth and Family Services Scholarship:  
Sky Samuel (BSW)

Mary Hill Scholarship:  
Lourdes Elisse Tan

Henry Maas Memorial Scholarship:  
Jennifer Hill (PhD)

Penny Hicks Service Award:  
Val Reede (MSW)

Marjorie Ellis Topping Memorial Medal:  
Amy Rappaport (BSW)

BC Association of Social Workers Prize:  
Sky Samuel (BSW)

Rachel J. Maclean Prize:  
Selena Chang (BSW)

Lilian To Memorial Graduate Scholarship:  
Sadia Ramirez Molina (MSW)

Roop Seebaran Essay prize:  
Ashley de Regil (MSW)

Richard Splane Doctoral Scholarship:  
Harvey Bosma (PhD)

Faculty of Arts Student Leadership Award:  
Julia Peirce (BSW)  
Jennifer Smith (MSW)

Poster Prize UBC 7<sup>th</sup> Annual Multi Disciplinary Undergrad Research Conference (MURC) Award – 2008:  
Leya Eguchi (BSW)

CIDA funded Students for Development Award:  
Ryna Olonan (MSW)

Michael Smith Foundation for Health Research Award – Senior Graduate Scholarship:  
Harvey Bosma (PhD)

Michael Smith Foundation for Health Services Research – Post-doctoral Research Fellowship:  
Anat Zaidman-Zait (PhD)

## First Nations BSW students:

**O**ur traditional names are Siemthalt aka Melodie Pierre (daughter - Katzie/Shishalh Nation) and Iyal-xwemat aka Gertie Pierre (Mother - Shishalh Nation). We were given the opportunity to enroll in the FNBSW program credited through UBC back in 2003. We attend class once a week and commute from the Sunshine Coast to Squamish Nation's traditional territory for our class. We (14 students) have been working diligently to attain our Bachelor's of Social Work Degree. Although there have been obstacles thrown in our path, we respond much like a flowing stream.....we find our way AROUND the obstacle or if need be go right THROUGH it!

We've found this program to be exceptionally interesting because our fellow students have so much knowledge and experience. They freely and openly share this information to help inspire us to be a catalyst for changes within our own community. Sure in the beginning when we first started some students were a little shy to the sharing circle, but once they gained their confidence and inner voice they began sharing their knowledge and teachings without even being aware of it! We'd like to share our feelings in regard to the literature that are usually assigned within our program.

There are times when we have a mix of European context material and also First Nation's literature. This seems to encourage us to meld together the two but also never to forget our own 'grass root' teachings. We never fail to lose touch of our culture and traditional way of life, we like to find a way to incorporate this and on how we will present ourselves to prospective clients. We'd like to say that this is what makes us such a strong community! We aren't ever forced to a higher education, but I feel that it's crucial for First Nation's people to grasp that higher education, and have the confidence to share that strong inner voice and knowledge of who we truly are as First Nation's people - STRONG & PROUD!

Uhl-numsh-chalap (Thank You)  
Melodie Pierre and Gertie Pierre, FNBSW students

## SLC 2008 – Activation Energy!

What is the SLC? The Student Leadership Conference is a venue for 1250 student leaders to gather, share and learn; the SLC is where the student leaders are.



6th Annual Student Leadership Conference – Chan Centre, UBC

**O**n January 12, 2008, UBC held its 6<sup>th</sup> Annual Student Leadership Conference, and this year, I was asked to be a presenter. With the theme "Activation Energy!" the conference presented the opportunity for students to

teach and to learn from other students about leadership skills. 1250 student leaders from UBC attended a full day of interactive workshops presented by both fellow students and local leaders from the greater community; including leaders from Education, Science and Technology, Sustainability and Environment, Global Citizenship, and Building Community – to name just a few. The busy day ended with an inspirational, challenging and informative address from keynote speaker and praised humanitarian, Stephen Lewis.

Under the mentorship of Graham Riches, the Director of the School of Social Work, and in collaboration with UBC alumni, Nathan Allen, I helped facilitate a workshop entitled "Insite for the Future". With a goal

to stimulate students to create change in their own communities surround drug abuse issues, Nathan and I presented the attempts we have helped with in saving Canada's only safer injection facility in Vancouver. We used an interactive interface which allowed students to brainstorm activities and actions that could be used when trying to bring important issues to the public front, and to bring about change.

Being asked to participate in this year's conference was an enlightening experience for me. Surrounded by hundreds of students all with the desire to create change, was inspiring and restored my faith in the future leaders of our country.

Jen Smith 4<sup>th</sup> yr MSW ....

## CHIU Volunteer Workshop,

Sunday, January 27, 2008 at the Downtown Community Health Centre

Back: Steve Co (2nd year Medical Student/CHIU Public Relations), Jen Allan (Educator on Survival Sextrade), Jason Luey (MSW Student/CHIU Social Work Rep), Brent Moore (2nd year Dentistry Student/CHIU Dentistry Rep) Front (left to right): Amit Khosla (3rd year Medical Student/CHIU Public Relations), Trevor White (Youth Counsellor)



### Purpose:

To orientate UBC Student volunteers to the Health Unit and the residential area of Vancouver Downtown East Side (DTES). To promote professional interdisciplinary learning amongst prospective healthcare students.

On a chilly Sunday morning, about 25 students eagerly waited inside the Health Centre to learn more about the popular CHIU program. CHIU Executives provided prospective volunteers an orientation of the clinical facility. Jen Allan (an educator on survival sex trade)

and Trevor White (a youth counsellor) also provided a guided tour of the community.

CHIU stands for Community Health Initiative by University Students. Being a student-run volunteer program, CHIU is based on a service-learning interdisciplinary model involving various health care faculties such as medicine, nursing, occupational therapy, pharmacy, and social work. It joins the prospective students and residents of Vancouver's Downtown Eastside (DTES) in a partnership to promote learning for all participants, as well as empowerment and improved health outcomes for DTES residents.

All social work students are encouraged to participate as CHIU [www.chiu.ca] can provide opportunities in the areas of social work practice, program development, research, and interdisciplinary learning.

Jason Luey, BA, BSW, RSW  
UBC MSW Student

**The Health Care Team Challenge** is a popular annual event. Before a live audience, two teams of students work together on a clinical case study designed by faculty members. The case is given to them just a few days prior to the Challenge. As new developments in the case are revealed the two teams will be challenged, individually and as a team, to demonstrate best practices in patient care and the effectiveness of interprofessional collaboration in a clinical setting. The Challenge provides a stimulating and fun exercise for students, faculty and audience." (<http://www.chd.ubc.ca/hctc>).



Left to right: Jen Smith, Sky Samuel, Grant Charles [Chair, Field Education]

Working in an inter-professional team is a reality for most Social Workers. Whether you work in a hospital environment, for the ministry, or in a grass roots organization, Social Workers often come from a theoretical background which is an imperative contribution to the team. Having a Social Work point of view allows a team to see aspects of clinical cases that may not be otherwise taken into consideration.

This 2007 Health Care Team Challenge had two groups of students from all Health Disciplines – Occupational Therapy, Physiotherapy, Pharmacy, Medicine, Nursing, Land and Food Systems, Social Work, Dentistry, and Psychology. Each team was given time to meet before the challenge to meet each other, establish rapport, gain an understanding of each other's field of study, and to create a strategy for the event. A general case study was presented for the team to collaborate on, but little further information on the direction of the case.

The Challenge was held in the Norm Theatre (in the SUB) in front of a live audience of UBC students and professors. Each team has 5 minutes to present their case, allowing each discipline to state their contribution to the audience. While the second team presents their case, the first team is given further information and questions regarding the next steps to take. When the second team is finished, they are given additional questions while the first team presents their next actions. This "switch" continues for three sessions, when a final verdict is determined. No team is declared the winner, but all members are given feedback on their responses.

My personal experience (Jen Smith) of the HCTC was exciting. Many of the members of my team did not take into consideration the importance of having a Social Work perspective on the team, and were surprised to hear some of the input I had for our case study. The members were very knowledgeable on their own discipline – which taught me a lot about their roles – and welcomed hearing my points. The actual event was hectic, not knowing what questions we would get, or what hardballs would be thrown at us for the next round. It was fast paced, pressured and a whole lot of fun.

My experience (Sky Samuel) echoes Jen's. Learning how to collaborate on a team of diverse professional backgrounds was definitely an interesting experience, especially when we only had 5 minutes to do so! I can now see the importance of interprofessional practice as each profession had critical information to offer to our "patient's" case. I was especially pleased with the way our team came together to plan both short and long term goals for our patient that included physical, emotional, spiritual, and mental spheres. Overall, I was quite nervous to compete in front of a jam-packed theatre. However, in the end, I enjoyed working with other professions and learning about their contribution to client/patient care.



The Health Care Team Challenge was definitely an experience both of us are happy to have participated in. Look for it again next September, and go experience it for yourself!

Jen Smith, 4<sup>th</sup> year MSW student and  
Sky Samuel, BSW student

## CSWE Conference

From October 27-30, 2007, Dr. Mary Russell and I attended the Council on Social Work Education conference in San Francisco. It was by far the largest conference I had attended, with the number of participants exceeding 3,000. Dr. Russell and UBC grad Annemarie Gockel presented their most recent research "Return to Social Work Roots: Parents Confirm Value of Ecological Perspective" at a poster series session. In addition, the UBC School of Social Work joined with four other Canadian University Schools of Social Work in the Exhibit Hall to display our programmes and opportunities. The participation of the Universities of York, Windsor, McGill, Calgary and ourselves resulted in a significant Canadian presence amongst the over 300 booths. We staffed the booth at breaks and lunch hours, and had the opportunity to meet many interesting social work students and faculty from across North America. There was good scholarly exchange as well as significant interest in what Canada has to offer the field of social work both at the academic and practice levels.

I did manage to attend a few sessions. One of the keynote plenary speakers was Stedman Graham (yes, Oprah's man), who had released his recent book, "Diversity: Leaders, not Labels". He is an inspirational and motivational speaker who was able to command the large audience, yet speak to the hearts of all of us. And in case you are wondering, his first degree was a BSW!

Other sessions I attended were in child welfare, my main area of interest. In particular, the U.S. shares a similar problem that we have here in recruiting and retaining social workers to work in 'public child welfare'. There were presentations on recent research in the field and innovative ways they are look-

ing at to keep social workers employed in child welfare. There was also discussion around the implications for Schools of Social Work to assist in preparing social workers for front-line work in the 21st century.

Overall it was an excellent conference and I came home both exhausted and with a renewed sense of commitment to the field.

Janet Douglas,  
PhD student

## SCHOOL UPDATES

### First Nations BSW Programme – Pilot Project

In 2003, the School of Social Work and Family Studies began delivery of a pilot First Nations BSW program, to be delivered off campus to Aboriginal students from Squamish First Nation, Sechelt First Nation and L'il Wat First Nation. The program evolved from a request from Squamish Nation to obtain social work education for their staff and administrators.

After extensive research, including a scan of similar programs across Canada, a review of curriculum from these programs, a community needs assessment and curriculum workshop with Aboriginal faculty and graduate students, a framework for delivery of the program was developed to guide implementation, which began in 2003.



FNBSW programme students

Since then, the students have completed prerequisite courses and are just finishing the last of the third year courses. They are expected to complete the social work component of a BSW degree in 2010. This innovative approach provides flexibility of access to students who may not have otherwise been able to obtain a BSW, as students were able to enter the program without requisite Arts credits generally needed for admission to the BSW program. Students will be able to fulfill the Arts requirements after completion of the social work component, an option which allows them to benefit from entering the program and obtaining the immediate educational needs expressed in the community needs assessment.

A majority of students are full-time employees of their Bands, working in areas such as housing, health, mental health, prevention, child welfare, youth services and family support, and have an average of 10 years experience in these fields. Thus they bring a richness of knowledge and experience to their studies.

Overall, it has been a great opportunity for collaboration between the School and local First Nations communities.

Barbara Harris  
First Nations BSW Advisor

## The Centre for Research on Personhood in Dementia (CRPD)

is located on the first floor of the School of Social Work. The CRPD focuses on understanding and supporting person-centred care and approaches to dementia. Perhaps one of our biggest initiatives over the past few months was an international workshop held June 4 - 6 focused on examining the links between research and practice. The CRPD took the lead in bringing together a small group of national and international researchers to begin to consider more effective ways of fostering the application of research-based knowledge. The workshop was followed by a public colloquium by Geraldine Boyle, a researcher and social analyst from the Bradford Dementia Group in the UK. Her work focused on examining the new English Mental Capacity Act - particularly timely given new BC Adult Guardianship legislation that is expected to be enacted in 2009!

In addition to conducting research, an important function of the Centre is to offer opportunities for student training and development. Currently, we have three doctoral students (Sing Mei Chan, Elizabeth Kelson and Louise Stern) and one graduate student (Marcus Greatheart) doing work within the CRPD. As well, we are pleased that Sally Clark, the office administrative staff person and most recently, Jasmyne Rockwell, a graduating MSW, Research Coordinator, have joined the CRPD. Jasmyne's role will focus on assisting with grant preparations and communication within and outside of the CRPD.

Throughout the year, the CRPD has hosted monthly public seminars featuring local and international researchers and social analysts doing work around personhood and dementia. See our website ([www.crpdpd.ubc.ca](http://www.crpdpd.ubc.ca)) for more information about these seminars, they are an excellent way for remaining updated on new research and development in this area but also provide a forum for discussion and development of ideas.

Deborah O'Connor, Associate Professor  
Director, CRPD

## The Community Living Research Project

based in the School with Tim Stainton as Principal Investigator, and Grant Charles as co-investigator along with colleagues elsewhere at UBC, Kwantlen and the Canadian Association for Community Living is continuing its work exploring Community Living supports and services for adults in four general topic areas: young adults transitioning from high school, residential alternatives to group homes, non-residential supports, and services for seniors. Recent publications include:

**A series of five reports which present the findings of a qualitative study** conducted throughout BC involving interviews with 35 self advocates and 70 family members;

**Home Sharing: A Review of Current Practice and Policy with Recommendations.** This report considers what Home Sharing is and provides an analysis of the key issues and provides recommendations on how to ensure that this model of support is a safe, secure and effective model for those who choose it;

**Removing Barriers to Work: Flexible Employment Options for People with Disabilities in BC.** This report published by the CCPA looks at how the benefits system and supported employment and social enterprises can support people to gain and maintain employment.

We are just completing a large scale survey of family members in BC and will shortly be undertaking a similar survey of people with developmental disabilities. We anticipate the project will conclude by April of 2009. We invite you to visit our website <http://www.communitylivingresearch.swfs.ubc.ca/> where you can download all of the above documents along with other reports and presentations produced by the project.

Tim Stainton, Professor

## INTERNATIONALIZATION

In June 2007, the Canada-China collaboration Project: "Building the Foundation for a Harmonious Society: Canada-China Collaborative Study on the Legislation of China Charity Enhancement Law" organized its second International Symposium on Charity Law in Beijing, China from June 12 to 14. More than 80 people from China attended the symposium. The participants included 30 guests from seven countries, three vice-ministerial officials, legal scholars from top universities in Beijing and many officials from different government departments. Resembling the format of the first Symposium held in Vancouver, a dialogical model was adopted. Through small group discussions, many useful insights were generated for the Chinese government officials from various departments attending the conference. The closing of the Beijing Symposium also signified the end of the collaboration with our partners in China – the Legislative Affairs Bureau of China, the Ministry of Civil Affairs and Beijing Normal University. However, the project has one more component to be completed. Before the Conference, the Canadian team had initiated a study on grassroots NGOs in China. Two doctoral students had completed a two-month field study in four cities in China. Data analysis and report writing will be taking place some time this summer. We believe that this study will shed light on the development of charitable activities in China.

In October 2007, the co-director of the Canada-Nigerian Project: "Promoting Women Empowerment

by Building Social Work Capacity in Nigeria" visited the School and met with Professor Graham Riches, Dr. Miu Chung Yan, Dr. Tim Stainton, Dr. Brian O'Neill and Dr. Paule McNicoll. The meeting discussed the role and expectations of the School and built a direct connection between the School and the University of Benin. As confirmed in the meeting, our School will provide doctoral education to one of the faculty members of the University of Benin and take the leadership in re-structuring their BSW curriculum. During the reading week in February 2008, Dr. Miu Chung Yan, a co-applicant of this Project, visited the University of Benin and taught a course on Social Work Theories and Practice to the special MSW students. In June 2008, a group of five special MSW program students may come to Vancouver to study HIV/AIDS services which is in critical demand in Nigeria.

Miu Chung Yan, Associate Professor

Research Project "The Forced Migration of Colombians."

Between July and August of 2007, nine sessions for the presentation of research findings were organized in the three countries (Colombia, Ecuador and Canada) where the research has been conducted. The principal investigators Pilar Riaño-Alcalá from the School of Social Work at UBC and Marta Villa from Corporación Región in Medellín, Colombia joined the local teams of researchers and presented to representatives from government and non-governmental organizations, universities, international cooperation and humanitarian protection agencies and to a large group of internally displaced people and refugees. Over 600 people attended the nine presentations.

"Workshop Metropolitan Governance Mechanisms for Institutional Collaboration and Civil Society Participation."

This workshop took place in Vancouver in October, 2007. It brought together Brazilian and Canadian participants in the project "New Public Consortia" (University of British Columbia and Ministry of Cities, Brazil) to identify and explore the lessons learned in Canada in establishing inter-jurisdictional structures and democratic processes for metropolitan governance. The workshop built upon the questions, ideas and lessons learned in the April 2007 workshop in Recife, Brazil on "Mediation and Citizenry. Methods of Violence Prevention through the Public Consortia Framework".

Pilar Riaño-Alcalá, Associate Professor

## FIELD EDUCATION

On January 8<sup>th</sup> and 9<sup>th</sup>, the School was pleased to host its annual Student/Community Practitioner conference. The conference is a component of the field education program providing opportunities for students to experience specialized workshops relating to social work practice issues in a range of community settings. This year the itinerary included:

- The Wraparound Process: An Innovative and Intuitive Approach to Supporting Individuals and Families with Complex Needs (Melissa Cailleaux, Atira Women's Resource Society)
- Working with Women on Substance Use and Related Health Issues in Childbearing Years (Nancy Poole, ActNow BC-Healthy Choices in Pregnancy, BC Center of Excellence for Women's Health)
- Effectively Working with Immigrant, Refugee and Visible Minority Women and Children/Youth Who Are Experiencing Family Violence (Anna Foschi, Ranjeet Kanda & Sarah Tong, Vancouver & Lower Mainland Multicultural Family Support Services Society)
- Food, Hunger and Homelessness: From Talk to Action in Social Work Practice (Judy Graves, City of Vancouver, & Graham Riches, School of Social Work, UBC)
- "Only Fish Cannot See That It Is Water In Which They Swim" (Heather Whiteford, Family Services of Greater Vancouver)
- "Hearing" the Person with Dementia (Deborah O'Connor, School of Social Work, UBC)
- Domestic Violence and Social Work: Past and Present (Kathleen Mackay, Providence Health Care and Vancouver Coastal Health Authority)
- Mental Health Practice: The Social Work Role (John Fox, Douglas College)
- Planning for Problem-Solving, Community Development, and Social Change (Peter Boothroyd, School of Community and Regional Planning, UBC)
- HIV/AIDS: Social work & Interprofessional Practice (Mary Petty & Wallace Robinson, St Paul's Hospital)
- Forensic Psychiatric Services Commission (Francis Murzello, Peter Parnell, Jim Slade & David Westell, Forensic Psychiatric Services Commission)
- Why Investigate? When there's Family Development Response (Paul Houle & Tracey Potter, Ministry of Child and Family Development)
- Working with Children and their Families in Health Settings (Wieslawa Kastelik & Pauline Mullaney, BC Children's Hospital & Lynn Bruce & Allison Mounsey, Sunnyhill Health Centre for Children)

- Making the Connection between Policy, Practice and Research Theory. Who Knew? (Richard Sullivan, School of Social Work, UBC)
- Slavery in our Midst: Human Trafficking 101 (Tamara Holdal, Three Bridges Clinic)

Overall feedback for the conference was very positive. Many thanks to all of the presenters for contributing to the field education component of the program.

Grant Charles, Associate Professor

### Practice Makes Perfect: Education of Health Professionals in Community, Clinical and Simulated Settings

I was the fortunate recipient of a free registration in a draw with the School of Social Work. This provided me with a great opportunity to spend two days at this international conference in November 2007 which was sponsored by the BC Academic Health Council. The Conference Co-chairs from UBC were: Grace Mickelson, Practice Education Committee, BC Academic Health Council and Grant Charles, College of Health Disciplines and School of Social Work.

This conference had a unique structure in that it was organized around four streams: inter-professional, capacity building, preceptor development and simulation. Each workshop or panel was categorized to allow participants to focus their learning.

Focus was on research, networking and tools to assist those involved in designing and implementing field education. It provided an occasion to hear how other field settings and educational institutions were grappling with some of the challenges. The dilemmas faced in social work field experiences resonated with all other disciplines in health care. Health Care Organizations are challenged to encourage field supervisors in work settings pressured by cutbacks and reorganization and to strive ensure quality field education experiences to fill the gaps with work shortages in health care. Some settings have created innovative practicum arrangements to meet the student need when there are not enough traditional placements available. From the student's perspective, non-traditional practicum arrangements have strengths and draw-backs. Most students wanted a traditional placement that offered a specific baseline of skill development in their field.

Some research looked at burnout among health care professionals and the benefits of field supervision to



counter the effects of emotional exhaustion. A vast majority of field supervisors found student supervision a positive experience that enhanced their work including such benefits as refreshing information, self-reflection, recognition of work and professional growth. Most organizations and educational institutions had very few ways to formally recognize the contribution of field supervisors, and yet it was acknowledged that this was a vital piece of skill based learning for students and valuable for organizations as a pool of potential employees.

Grant Charles presented research that explored what students viewed as effective clinical supervision in social work field experience. This included such areas as: respectful environment, fair evaluation, knowledgeable role models, good teaching skills, clear communication, approachable, encouragement to learn about themselves, career advice, confidence in own skills, partnership in learning, significant experience in the field, partners in learning and supervisors who spoke positively about other team members. There appeared to be very few social workers attending the conference or presenting. I wondered how social work might increase its voice in health care education which appears to be dominated more by professions such as nursing, given the larger numbers and more influential position in health care organizations.

One resource that may be useful to those of you in field supervision was a free online program with self-directed modules designed for clinical supervisors and students. It can be accessed at: [www.preceptor.ca](http://www.preceptor.ca)

Pat Roles, MSW, RSW, BCATR  
Professional Practice Coordinator  
Children's and Women's Health Centre

## RESEARCH ROUNDUP

GRANT CHARLES has just published an article with Dr. Thom Garfat entitled "How Am I Who I Am? Self in Child and Youth Care" in the Journal of Relational Child and Youth Care Practice. He has collaborated with a number of co-authors to produce four other articles in press including: "Self-Mutilative Behaviour among Young People in Residential Care.", "The Impact of an Interprofessional Rural Healthcare Practice Education Experience on Students and Communities", "Home-based Early Intervention Programs in North America." and "The Dynamics of an Interprofessional Team: The Interplay of Child

and Youth Care with other Professions within a Residential Treatment Milieu". Grant was an invited speaker at a number of recent conferences including: the Canadian Society for Medical Laboratory Sciences Leadership Forum, the British Columbia Association of Social Work Annual Conference, the UNESCO-APEID International Conference in Bangkok, the International Symposium on Sufficiency Economy, Participatory Development and Universities, and the International Conference on Educating Health Professionals in Community, Clinical and Simulated Settings. His current research on young carers is in collaboration with Tim Stainton and Sheila Marshall.

EDWARD KRUK continues his work as director of the Separated and Divorced Fathers Cluster of the Fatherhood Involvement Research Alliance (FIRA), now entering its fifth year as a SSHRC CURA project. He is undertaking new research on the lived experiences of non-custodial mothers, and recently completed a policy paper for FIRA, "Child custody, access and parental responsibility: The search for a just and equitable standard". He is the school's new representative on the UBC Behavioural Research Ethics Board.

GRAHAM RICHES has two publications in press: 'Right to Food within Canada: International Obligations, Domestic Compliance' in G. Gilchrist James and R. Ramsey, eds, *International Social Work: Canadian Perspectives*, Toronto: Thompson Educational Publishing, and 'Canada: One step forward, two steps back?' (with E. Lightman) in P. Alcock and G. Craig, eds, *International Social Policy: Welfare Regimes in the Developed World*, New York: Palgrave (Revised Edition). He presented an invited paper "Hunger and the right to food: food access in rich societies" at a symposium on 'Income-related food access: the role of health and social policy' at the 19th International Union for Health Promotion and Education World Conference, Vancouver, 14 June, 2007. As a consequence of walking the food lines in Vancouver's Downtown Eastside with Judy Graves, the Coordinator of the Tenant Assistance Program, City of Vancouver, their jointly written article 'Let them Eat Starch' was published on-line by *The Tyee*, 31 October, 2007.

MARY RUSSELL, BARBARA HARRIS AND ANNEMARIE GOCKEL completed their study of parent perspectives on parenting education. Results have been presented at the Association for Research on Mothering conference in Toronto by Mary on the topic, "Mothering in poverty: Single mothers speak out"; at the Council on Social Work Education Annual Meeting in San Francisco by Mary and Annemarie presenting a poster on "Return to

Social Work roots: Parents confirm value of an ecological perspective" and at the BCASW Fall conference in Vancouver by Barbara and Mary presenting a workshop on "Parenting in poverty: What 'high risk' parents tell us about best 'practices'". Results have also been published in the *First People's Child and Family Review Journal*, under the title, "Urban aboriginal mothers' experiences with family preservation services", authored by Barbara Harris, Mary Russell and Annemarie Gockel. Another article, "Parenting in poverty: Perceptions of high risk parents" is in press with the *Journal of Children and Poverty*".

TIM STAINTON continues to work on the Community Living Research Project reviewing adult services in BC. This project is entering the final research phase with a large scale survey of people with developmental disabilities and their families in BC who use Community Living Services. The project is about to release the results of the qualitative survey of the same population along with policy reviews of the Family Care Model Homes and the interface between Health and Community Living Services. A related study on employment and benefit supports for people with developmental disabilities or mental health issues undertaken with SPARC-BC and CCPA has just been completed and will be released shortly.

RICHARD SULLIVAN has concluded his collaboration with the Children's Research Centre at Trinity College Dublin in the study of intercountry adoption to Ireland. Richard presented some of the findings of that research at an international conference in Dublin in February.

PILAR RIAÑO-ALCALÁ continues her work on the comparative research project "The Forced Migration of Colombians." During 2007, she and the project co-investigator Marta Villa (Corporación Región, Colombia) coordinated the publication in Spanish of three publications with the results of the first phase of the research per country. Pilar also coordinated the publication of the research results for the country case of Canada in English and French. Besides participating and organizing public presentations of the research in each country, Pilar presented various papers on the research at the Latin American Studies Association LASA congress, at the American Anthropology Association annual meeting, at the Colombian National Congress of Anthropology and at the Peter Wall Institute for Advance Studies conference on Interdisciplinary Perspectives on Health Disparities, Structural Violence and Social Suffering. During 2007, Pilar also made presentations on the topic of public art as critical pedagogy at the series Art and University of California, Los

Angeles, the OTIS California College of Art and Design and the University of Washington, Seattle. Pilar was the key note speaker for MOSAIC 2007 annual general meeting. Her speech was entitled "Movements and Dialogues Beyond Borders: Re-thinking Settlement and Community". Her article "Trails of Fear and Memory. Colombian Refugees in Canada" was submitted and accepted to be published in the edited book "Images de la violence en Amérique Latine" edited by Pierre Beaucage and Martin Herbert (Laval University Press).

FRANK TESTER has been appointed Research Advisor to the Qikiqtani Truth Commission, holding hearings on the relocation of Inuit from land-based camps to settlements in the Baffin Region of the eastern Arctic in the 1950s, 1960s and 1970s. Frank continues his work with Paule McNicoll and Nathan Lauster (Sociology) on the history of Inuit housing policy. He has applied, with Paule McNicoll, to a federal funding programme created in association with International Polar Year for a grant to make the Nunavut Social History database they developed, interactive, to include Inuit perspectives on the information in the database. Frank is also continuing his research on the history of Inuit residential schools.

RICHARD VEDAN is co-principal investigator in an international indigenous partnership between Canada and New Zealand exploring resiliency from the perspective of their indigenous health workforces. The purpose of this project is to identify what resiliency means for New Zealand and Canadian indigenous health workers, to discuss the role of formal and informal networks in supporting Indigenous health workers, and to develop a framework that will assist networks to support Indigenous health workers. Building on the experience gained by the CIHR supported BC ACADRE and the infrastructure established by the Michael Smith Foundation supported Network Environment for Aboriginal Health Research in BC (NEARBC) and the Territorial government supported Arctic Health Research Network and the similar developments in the Yukon Territory, Richard and his co-investigators will create a new network environment in BC, the and the Western Arctic (Yukon and Northwest Territories). The Network Environment for Aboriginal Health Research in BC and the Western Arctic (NEAHRBCWA) network will continue the mandates of health research capacity development, knowledge translation and support and training for Aboriginal health students by conducting culturally relevant and scientifically excellent research with the goal to improve the well being of all Indigenous Peoples. The foci will be: 1) Indigenous Knowledge,



including traditional medicine; 2) Infectious Disease; 3) Complex Interactions of factors which determine the health of populations; and 4) Aboriginal Research Ethics.

MIU CHUNG YAN spent two busy and fruitful months in China and Hong Kong. In June, as the Co-Director of the China Charity Law Project, he co-hosted the second International Symposium on Charity Law with the Legislative Affairs Bureau of China Ministry of Civil Affairs in Beijing. After the Symposium, Miu presented a paper entitled *Re-examining the Settlement House Tradition of People-Centred Approach: Case Studies of Two North American Cities* at the International Association of Community Development Conference in Hong Kong. In July, Miu was appointed as a visiting assistant professor at the Hong Kong Polytechnic University and presented a paper entitled *(Re)building Community: The Tales of Neighbourhood Third Sector Organizations in Two Cities* at the International Consortium of Social Development Biannual Conference. In September, Miu was appointed by Metropolis British Columbia, one of the five research centres of the National Metropolis Project, as the leader of the Settlement, Integration and Welcoming Community Domain. As a domain leader, Miu is responsible for nurturing and promoting research on issues related to settlement issues of immigrants and refugees in BC. As principal investigator, Miu presented the findings of a BCASW study on the "Readiness of Social Workers in Working with Newcomers." A brief summary of the study was published in the current issue of the Perspective, the newsletter of the BCASW. In November, Miu started a new project with the Association of Neighbourhood Houses of Greater Vancouver (ANH) to develop an interactive toolkit for organizations and individuals who are interested in establishing locally-governed neighbourhood-based multi-services non-project organizations. The Project was co-funded by the ANH and MITACS, a funding body which encourages collaboration between academic institutes and business and non-profit sector



Left to right: Dean Nancy Gallini, Patsy George, Verna Splane, Richard Splane, Keith Banting, Leonard Angel, Graham Riches

## The inaugural Dr. Richard B Splane Lecture on Social Policy

**O**n the occasion of his 90<sup>th</sup> birthday, Dr Richard B Splane was celebrated with the establishment of an Annual Public Social Policy Lecture which bears his name. The inaugural lecture was held on the 27<sup>th</sup> of Sept 2007 at the Liu Institute for Global Issues at University of British Columbia.

The event was co-sponsored by the School of Social Work, World Federalists Movement Canada, and United Nations Association in Canada, Vancouver branches. The lecture room was filled with family, friends, colleagues, students and community members and heard a brilliant presentation by Professor Keith G Banting of the Queen's University. The title of the lecture was *'Do Immigration and Multiculturalism Erode the Welfare State?'*, a topic of special interest to Canadians.

Dr Keith Banting is recognized internationally for his expertise on the politics of the welfare state and is one of Canada's leading scholars in the area of federalism and social policy. Linking of social policy with federalism and applying this framework to several daunting challenges confronting Canada such as the



Liu Institute for Global Issues lecture room

Immigration policy, Human Rights and Multiculturalism and the role of non - governmental sector, Dr Banting more than fulfilled the expectations of all present.

Dr Nancy Gallini, Dean, Faculty of Arts, University of British Columbia gave a special tribute to Richard Splane with messages of congratulations and the announcement of funding for a doctoral scholarship in social policy which has been established at the School of Social Work for a doctoral candidate. Dr. Splane's donation was generously matched by the Dean. Those present hailed this news, as it is a great way of honouring Richard who taught at the School of Social Work between the years of 1973 and 1982. Your donations to the scholarship fund are welcome and will be gratefully received.

The Sponsoring organizations wish to remind all that the annual Richard B Splane Public Lecture on social policy will be held again in October 2008 and invite you to join us to honour this great Canadian and a social policy exemplar.

### Celebrating the Profession

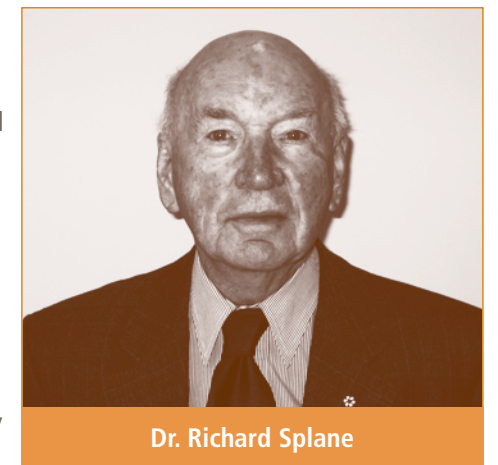
(Published in the CASW Bulletin, Volume 10, Number 1, April 2008)

### Social Work Pioneer

### Richard Splane, OC., MSW., PhD., LLD

**T**here can be no doubt that Dr. Richard Splane is one of Canada's foremost social work pioneers. His career as a social worker and social work educator spans more than half a century, and today, in his early nineties, Dr. Splane remains an active participant through his contributions to social work education and social development. Born and educated in Calgary he taught in one room rural schools during the Great Depression of the 1930s before seeing active service as a pilot in the Royal Canadian Air Force in the UK and Italy during World War 11.

Dr. Splane had already graduated with a BA in Economics and History from McMaster in 1940, but perhaps his future interest in social work was sparked by his studies in social policy at the London School of Economics (1948). Building on his early experiences including work in a Children's Aid Society in the eastern most counties of Ontario, his studies profoundly influenced his thinking about human need and social welfare. He was able at this time to observe the early development of the British welfare state which in the aftermath of the war advanced the central ideas of universal health, social security and social services. He was influenced by leading academic thinkers and the cabinet ministers of the new Labour administration and their conviction that central government must play a significant role in addressing the risks of unemployment, ill-health, poor education, low income and poverty. On his return to Canada he acquired an MA in Modern History (1948) and an MSW (1951) both from the University of Toronto. A decade later the University of Toronto awarded him their first Ph.D in Social Work.



Dr. Richard Splane

In his different roles over time as a recognized social worker locally, nationally and internationally, Dr. Splane has made a distinguished and exemplary contribution to the advancement of social work as a profession and more broadly to advancing social policy and social justice. As a prominent and influential senior federal civil servant (1952-72) involved in the early development of Canada's social security system he was known as the 'chief architect' of the *Canada Assistance Plan* (1966) frequently referred to as the foremost example of cooperative federalism. CAP, to the dismay of many, was eliminated in 1996, despite leading social workers and social policy analysts citing it as among Canada's most progressive pieces of social legislation. Significantly during the most creative period of Canada's welfare state (1966-73), Dr. Splane served as a senior Ottawa bureaucrat directing federal social policy.

Dr. Splane has been equally active though his voluntary service. His many board responsibilities (too many to mention all here) include the presidencies of



the BC Association of Social Workers (1978-79), the Canadian Association of Social Workers (1979-81) and of the International Council of Social Welfare (Canada) (1981-82). He was Vice-President of the Canadian Council on Social Development (1986-89). Additionally he has made a lifelong commitment to the work of the United Nations first serving as Canada's representative on the UNICEF Board in the early 1960s and since as a member of a number of UN social welfare expert committees.

Dr. Splane also shone as a teacher and scholar. He is today Professor Emeritus of Social Work at the University of British Columbia where he taught from 1973-84 and is the author of three books on leading figures in Canadian social development, with another in progress. Dr. Splane has been recognized for his achievements with a number of prestigious awards including the Order of Canada and honorary degrees from Wilfrid Laurier University (1988), McMaster University (1990), the University of British Columbia (1996) and the University of Toronto (2005). More recently he has endowed social work scholarships at Toronto and UBC.

In my view Dr. Splane's single most important contribution to Canadian social work and social policy has been to enlarge society's understanding and practice of social welfare including the introduction of progressive and inclusive social programs such as CAP. He has consistently over time urged us to broaden our idea of social welfare from the narrow poor law concept of residual welfare which so stigmatizes the most vulnerable in our society to one of social development which respects the common human dignity of all.. As a pre-eminent social work pioneer he has served society and the profession well. His philosophy of welfare is much needed today to inform social policy developments across Canada, and internationally.

Graham Riches  
Professor and Director  
UBC School of Social Work  
March 5, 2008

## FUNDRAISING

**F**undraising continues for priority projects that need your support. Please see the back page for a donation reply form.

### The 75<sup>th</sup> Social Work Anniversary Global Learning Endowment Fund

has been created in honour of the 75th anniversary of the School of Social Work (2005). This endowment will assist students in the School of Social Work with expenses locally, nationally and internationally to advance their learning and citizenship in globally challenging contexts. The endowment will be awarded on the recommendations of the School of Social Work.

### The Henry Maas Memorial Scholarship Endowment Fund

The Henry Maas Memorial Scholarship for doctoral students at the UBC School of Social Work has been created to honor his spirit, memory and his strong beliefs in the merits of theory and research informing social work education and practice. This scholarship will enable Doctoral students to develop their own theories and contribute to knowledge building in social welfare.

### Roopchand Seebaran Prize

In recognition and celebration of Professor Seebaran's significant contributions to community development, teaching and practice, and to anti-racist social work education during his academic career, the UBC School of Social Work has established the Roopchand Seebaran Prize. The prize is awarded on an annual basis to BSW or MSW student(s) whose essay or project work on the subject of either community development or anti-racist social work education is judged to be of the highest quality.

### Mary Hill Scholarship

Friends and alumni of the School have established a scholarship in honour of Professor Emerita Mary Hill, a pioneer in the field of social gerontology. Under the leadership of Kathy Hamilton (BSW, MSW) a group of committed fundraisers have raised over \$30,000 to endow a scholarship for students in Social Work who are studying in the area of gerontology.

### Social Work Annual Giving Fund

This fund allows the School to work beyond our annual operating budget to respond to priorities that arise each year. It supports the production and distribution of the School newsletter to more than 3,000 alumni, the Alumni Reading Room (hiring student assistance and purchasing publications).

### Lilian To Memorial Scholarship

A scholarship has been established in memory of Lilian To for graduate students in the UBC School of Social Work intending to study in the area of immigration and refugee policy and practice. Lilian, a social work graduate (1968) of the University of Hong Kong and an MSW graduate (1979) of the UBC School of Social Work, was a renowned and internationally recognized social worker and Chief Executive Officer (1988-2005) of S.U.C.C.E.S.S, Vancouver's leading Chinese social service agency with a particular interest in meeting the economic, social and cultural adjustment needs of new immigrants to Canada.

### Richard Splane Doctoral Scholarship

A \$2,500 scholarship has been endowed to recognize and honour Dr. Richard Splane's work as a distinguished Social Policy and Social Work academic, and Professor Emeritus at UBC. Dr. Splane's initial contribution to the endowment principal has been matched by the Faculty of Arts. The award is made on the recommendation of the School of Social Work, in consultation with the Faculty of Graduate Studies, to a doctoral student doing research in the area of social policy.



## The Dr. Richard B. Splane Lecture on Social Policy

*Presents*

**Professor Stephen J. Toope**  
President, University of British Columbia

A public lecture:

**International Human Rights:  
Canada's Role in Combating Global Poverty**  
**Thursday, October 2, 2008 at 5:30 p.m.**

Liu Institute for Global Issues, Multipurpose Room, 6476 Northwest Marine Drive, UBC

Sponsored by: **United Nations Association in Canada • World Federalist Movement of Canada**  
UBC School of Social Work

For further information, please contact: (604) 732-0448 or unacvancouver@gmail.com



Motivational Interviewing in Healthcare – Introductory Level

Sept. 26-27, 2008, 9 am-4 pm  
Cristine Urquhart, MSW, RSW

Strong evidence exists for the use of brief Motivational Interviewing (MI) to support people to make behaviour changes related to a variety of health concerns, such as substance use, diabetes and eating disorders. Health care and social service providers across disciplines and contexts note the benefits of working from an MI approach for both themselves and their clients. This 2-day introductory course focuses on understanding MI as a method of communication and the effectiveness of using a guiding style with clients. Gain MI counseling skills and strategies to assist clients in building motivation for change through a combination of lecture, role play, group discussion, case study and DVD/real-time demonstrations.

What past participants say:

- MI is simple, effective and brilliant.
- I will refer to the user-friendly materials in my daily practice.
- Excellent, clear, easy to understand and extremely applicable.

Instructor: Cristine Urquhart, MSW, RSW

Cristine has worked in community and acute care capacities and is an active member of the international Motivational Interviewing Network of Trainers (MINT) and a BC Association of Social Workers board member.

For more information and registration visit [www.cstudies.ubc.ca/social](http://www.cstudies.ubc.ca/social), or contact UBC Continuing Studies at [dorie.gray@ubc.ca](mailto:dorie.gray@ubc.ca), tel. 604.822.1459, fax 604.822.0190

Registration

NAME

ADDRESS

PROVINCE

PHONE (W)

POSTAL CODE

CITY

PHONE (H)

EMAIL

Registering for

☐ Motivational Interviewing - \$250

☐ Motivational Interviewing – Student: \$200 Student No

Payment method

☐ Cheque (payable to UBC)

☐ Visa

☐ Master Card

CREDIT CARD NUMBER

EXPIRY DATE

AMOUNT ENCLOSED OR TO BE CHARGED ON CREDIT CARD:

DONORS AND CONTRIBUTORS

The School would like to thank the following individuals for being financial supporters over the past few months. We apologize to anyone whose name has been inadvertently left off this list.

Mr	Peter	Adrian	Ms	Alison	Leaney
Mrs	Anna	Allen	Ms	Eleanor	Lipov
Mrs	Sheila	Archeck	Ms	Laurie	MacDonald
Ms	Christine	Armstrong	Mrs	Margaret	Maerov
Ms	Miriam	Balen	Ms	Julia	Marrs
Mrs	Kathy	Berggren-Clive	Mrs	Joan	McNeely
Mrs	Sally	Berry	Mr	Stanley	Merson
Mrs	Elizabeth	Blakely	Mrs	Jane	Mintenko
Mr	Lyle	Bogren	Ms	Thelma	Mulholland
Mrs	Sharon	Cartmel	Ms	Mary	Mutter
Ms	Bernice	Chiu	Mr	Robert	Myers
Mr	Allan	Cobbin	Dr	Agnes	Ng
Mrs	M JoAnn	Collins	Ms	Chi	Ng
Ms	Lil	Coupal	Dr	Geoffrey	Pawson
Ms	Laura	Crookshanks	Mrs	Rita	Price
Miss	Joan	Davis	Ms	Lee-Anne	Ragan
Mr	Sylvin	Deterville	Mr	Edmund	Ralph
Mrs	Mary	Dick	Ms	Jessica	Rothstein
Ms	Geraldine	Early	Ms	Yesha	Sawhney
Mr	Douglas	Engh	Mr	Alvin	Schimpky
Miss	E Jane	Fisher	Mrs	Aileen	Scott
Mr	Herbert	Forman	Mr	Roger	Smith
Mr	Michael	Garber	Dr	Harvey	Stalwick
Mr	Michael	Gildersleeve	Mrs	Gale	Steck
Mr	Peter	Glover	Ms	Rita	Swan
Mr	Patrick	Gorman	Ms	Margaret	Sy
Miss	Lynne	Guinet	Mr	Greg	Terpenning
Mr	Rodwell	Henry	Dr	Renate	Varwig
Ms	Susan	Higginbotham	Mr	William	Wallace
Ms	Tara	Jarvis	Ms	Colleen	Walsh
Mr	Rolf	Kellerhals	Mr	George	Wellwood
Mr	Joseph	Kirkman	Ms	Sheila	Wilkins
Mrs	Christine	Kline	Dr.	Lorne	M Price
Mrs	Elaine	Krilanovich-Cikes	Mrs	Faye	Wightman
Mr	Raymond	Lafond			Vancouver Foundation

